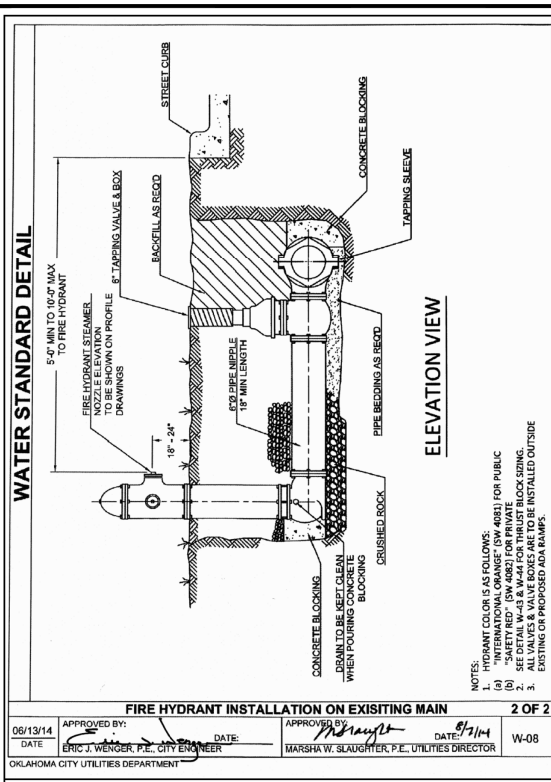
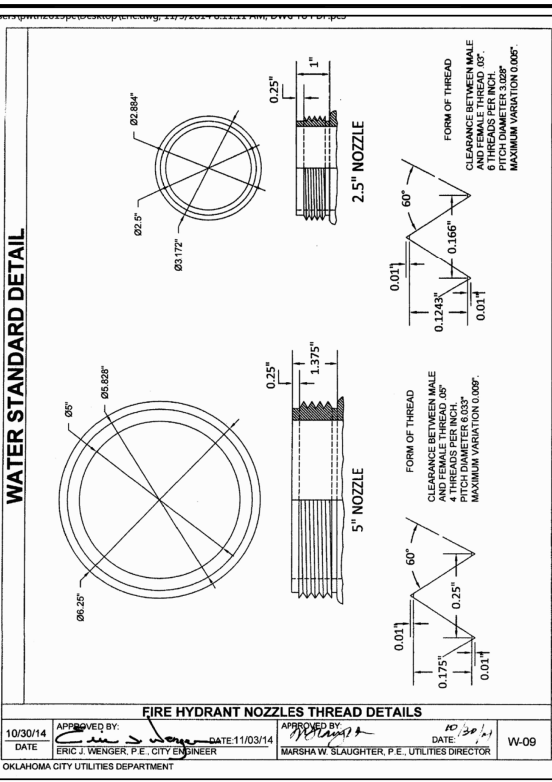


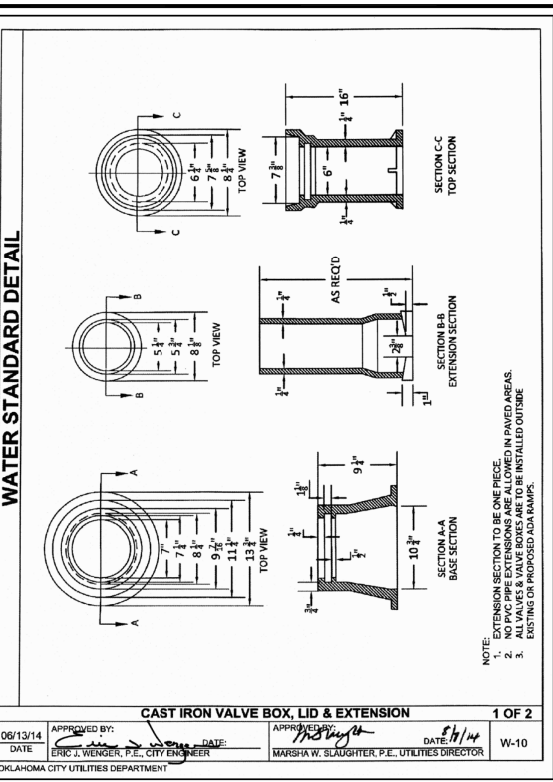
FILE PATH: Z:\STANDARD DETAILS & WATER METER SPECIFICATIONS\UPDATED STANDARD DETAILS 2014\WATERFINAL SHEET SWA15-STD-DET-2014-SIGNED.DWG  
 PLOTTED: Friday, November 07, 2014 1:41:37 PM



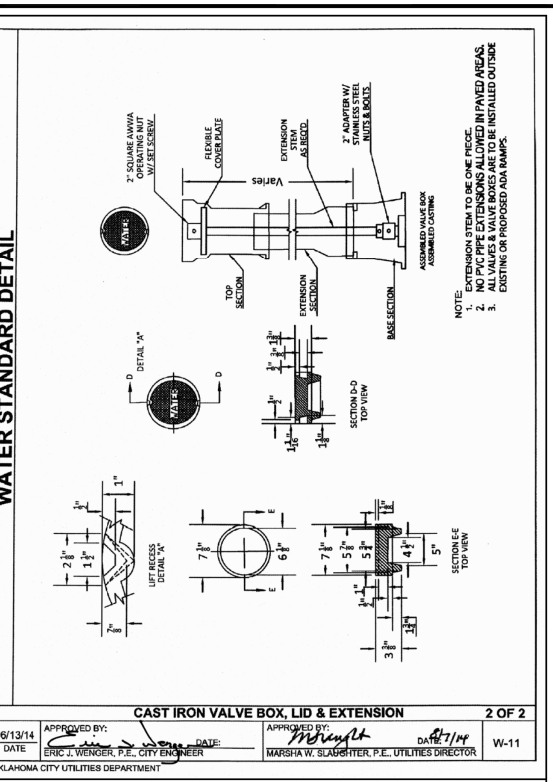
**WATER STANDARD DETAIL**  
**FIRE HYDRANT INSTALLATION ON EXISTING MAIN** 2 OF 2  
 APPROVED BY: *[Signature]* DATE: 8/1/14  
 ERIC J. WENGER, P.E., CITY ENGINEER MARSHA W. SLAUGHTER, P.E., UTILITIES DIRECTOR  
 OKLAHOMA CITY UTILITIES DEPARTMENT W-08



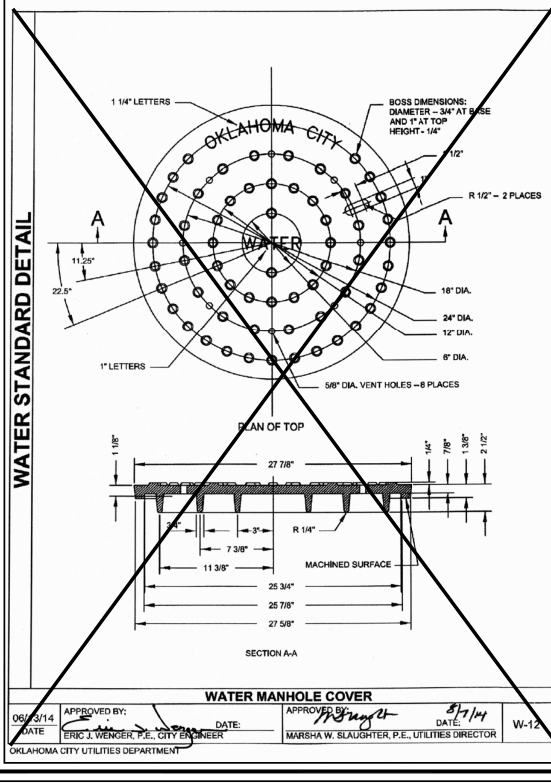
**WATER STANDARD DETAIL**  
**FIRE HYDRANT NOZZLES THREAD DETAILS**  
 APPROVED BY: *[Signature]* DATE: 11/03/14  
 ERIC J. WENGER, P.E., CITY ENGINEER MARSHA W. SLAUGHTER, P.E., UTILITIES DIRECTOR  
 OKLAHOMA CITY UTILITIES DEPARTMENT W-09



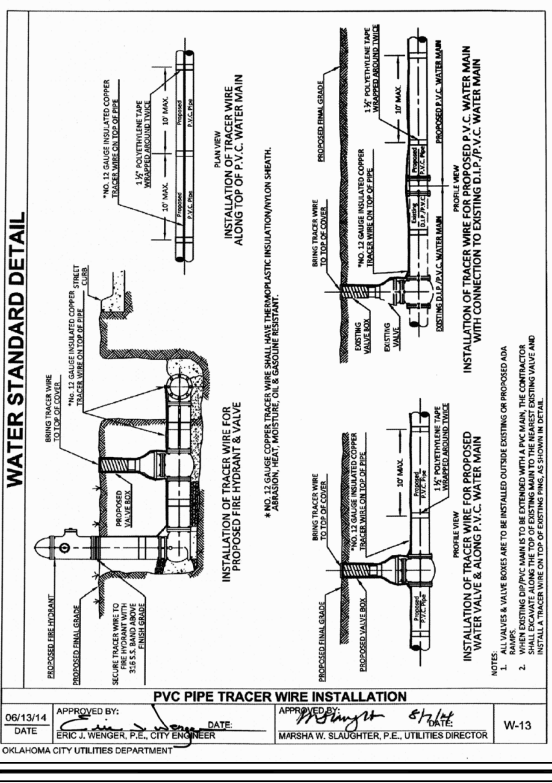
**WATER STANDARD DETAIL**  
**CAST IRON VALVE BOX, LID & EXTENSION** 1 OF 2  
 APPROVED BY: *[Signature]* DATE: 8/1/14  
 ERIC J. WENGER, P.E., CITY ENGINEER MARSHA W. SLAUGHTER, P.E., UTILITIES DIRECTOR  
 OKLAHOMA CITY UTILITIES DEPARTMENT W-10



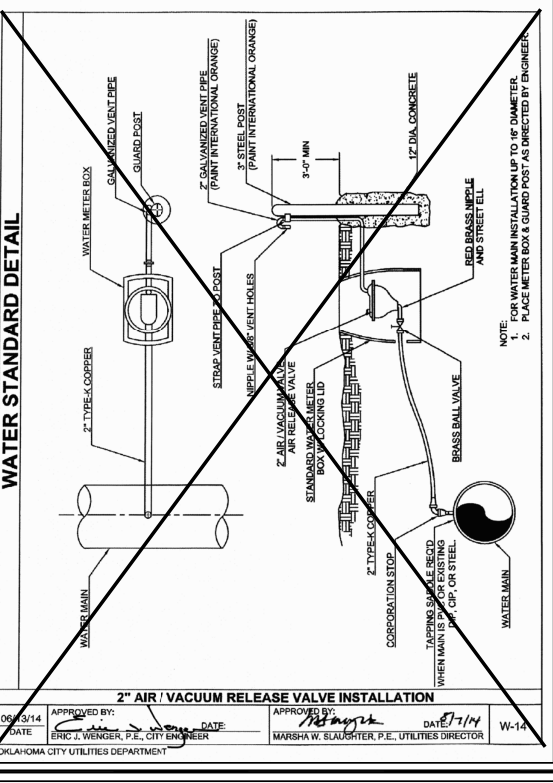
**WATER STANDARD DETAIL**  
**CAST IRON VALVE BOX, LID & EXTENSION** 2 OF 2  
 APPROVED BY: *[Signature]* DATE: 8/1/14  
 ERIC J. WENGER, P.E., CITY ENGINEER MARSHA W. SLAUGHTER, P.E., UTILITIES DIRECTOR  
 OKLAHOMA CITY UTILITIES DEPARTMENT W-11



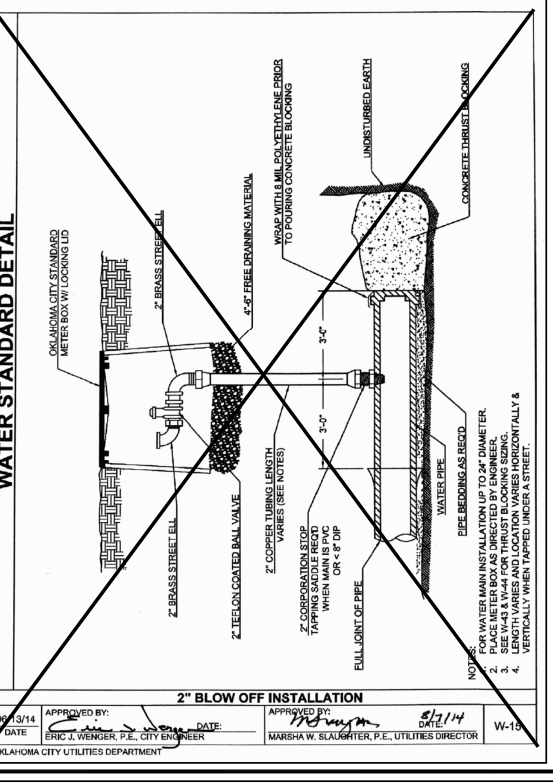
**WATER STANDARD DETAIL**  
**WATER MANHOLE COVER** W-12  
 APPROVED BY: *[Signature]* DATE: 8/1/14  
 ERIC J. WENGER, P.E., CITY ENGINEER MARSHA W. SLAUGHTER, P.E., UTILITIES DIRECTOR  
 OKLAHOMA CITY UTILITIES DEPARTMENT



**WATER STANDARD DETAIL**  
**PVC PIPE TRACER WIRE INSTALLATION** W-13  
 APPROVED BY: *[Signature]* DATE: 8/1/14  
 ERIC J. WENGER, P.E., CITY ENGINEER MARSHA W. SLAUGHTER, P.E., UTILITIES DIRECTOR  
 OKLAHOMA CITY UTILITIES DEPARTMENT



**WATER STANDARD DETAIL**  
**2" AIR / VACUUM RELEASE VALVE INSTALLATION** W-14  
 APPROVED BY: *[Signature]* DATE: 8/1/14  
 ERIC J. WENGER, P.E., CITY ENGINEER MARSHA W. SLAUGHTER, P.E., UTILITIES DIRECTOR  
 OKLAHOMA CITY UTILITIES DEPARTMENT



**WATER STANDARD DETAIL**  
**2" BLOW OFF INSTALLATION** W-15  
 APPROVED BY: *[Signature]* DATE: 8/1/14  
 ERIC J. WENGER, P.E., CITY ENGINEER MARSHA W. SLAUGHTER, P.E., UTILITIES DIRECTOR  
 OKLAHOMA CITY UTILITIES DEPARTMENT

		DESCRIPTION
		STD DRAWING W-09 MODIFIED
NO.	DATE	
1	11/07/14	
<b>WATER STANDARD DETAILS</b>		
DATE:	11/07/14	
DRAWN BY:	JDS	
CHECKED BY:	MWS/EJW	
SCALE:	AS SHOWN	
SHEET NUMBER		
<b>W-STD-02</b>		